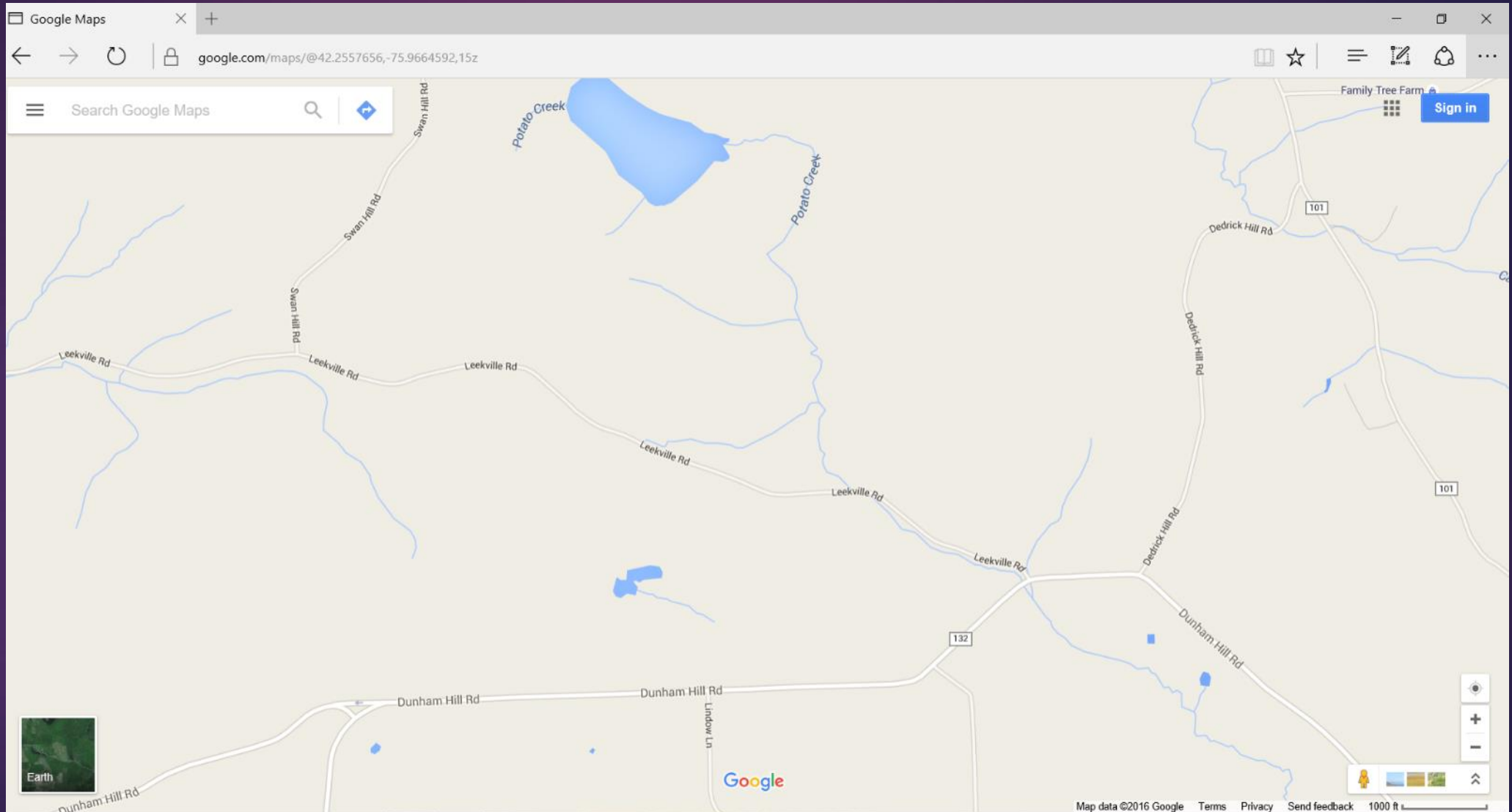




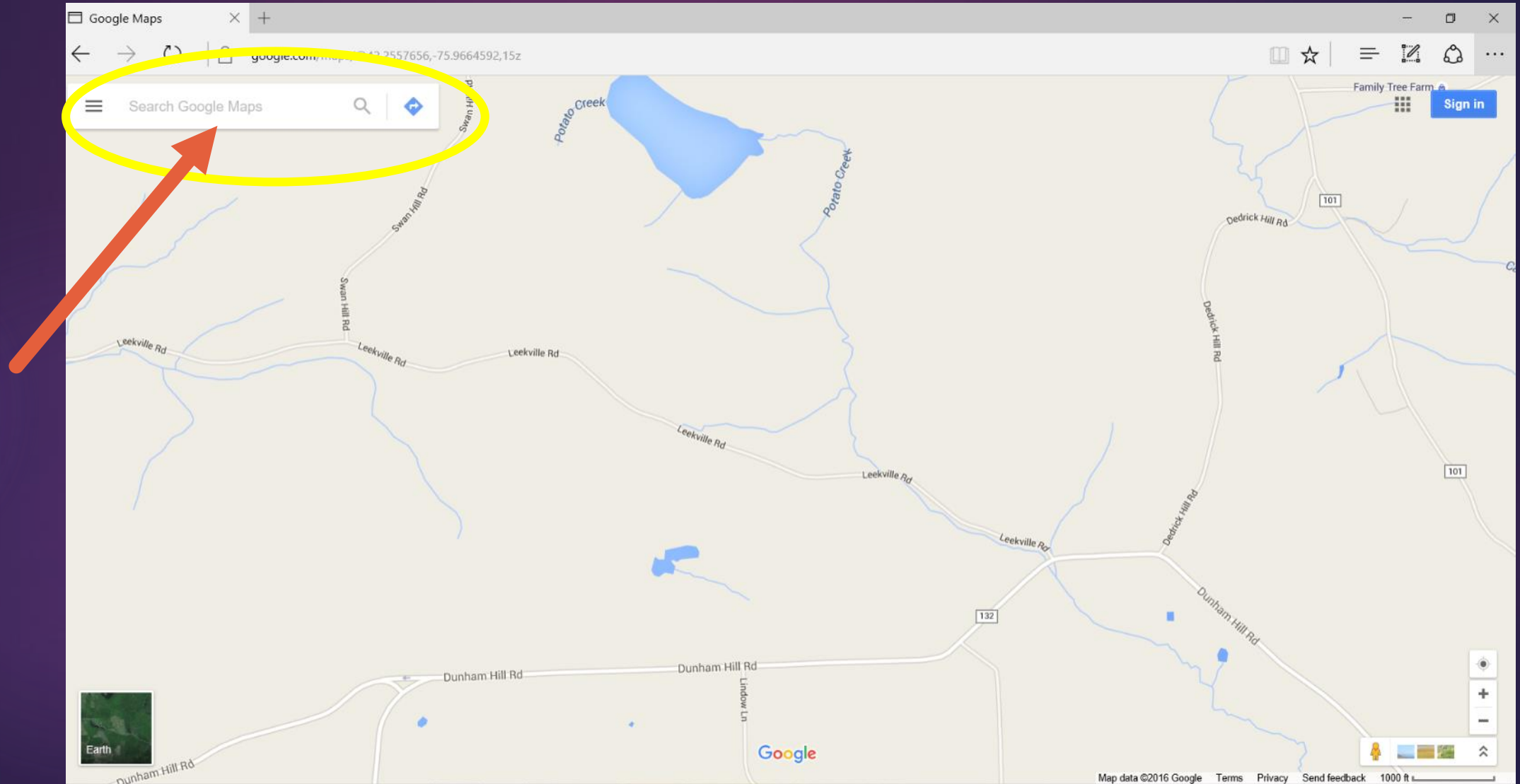
Creating a Farm Map Using Google Maps

A QUICK GUIDE, COURTESY OF BAYSTATE ORGANIC CERTIFIERS

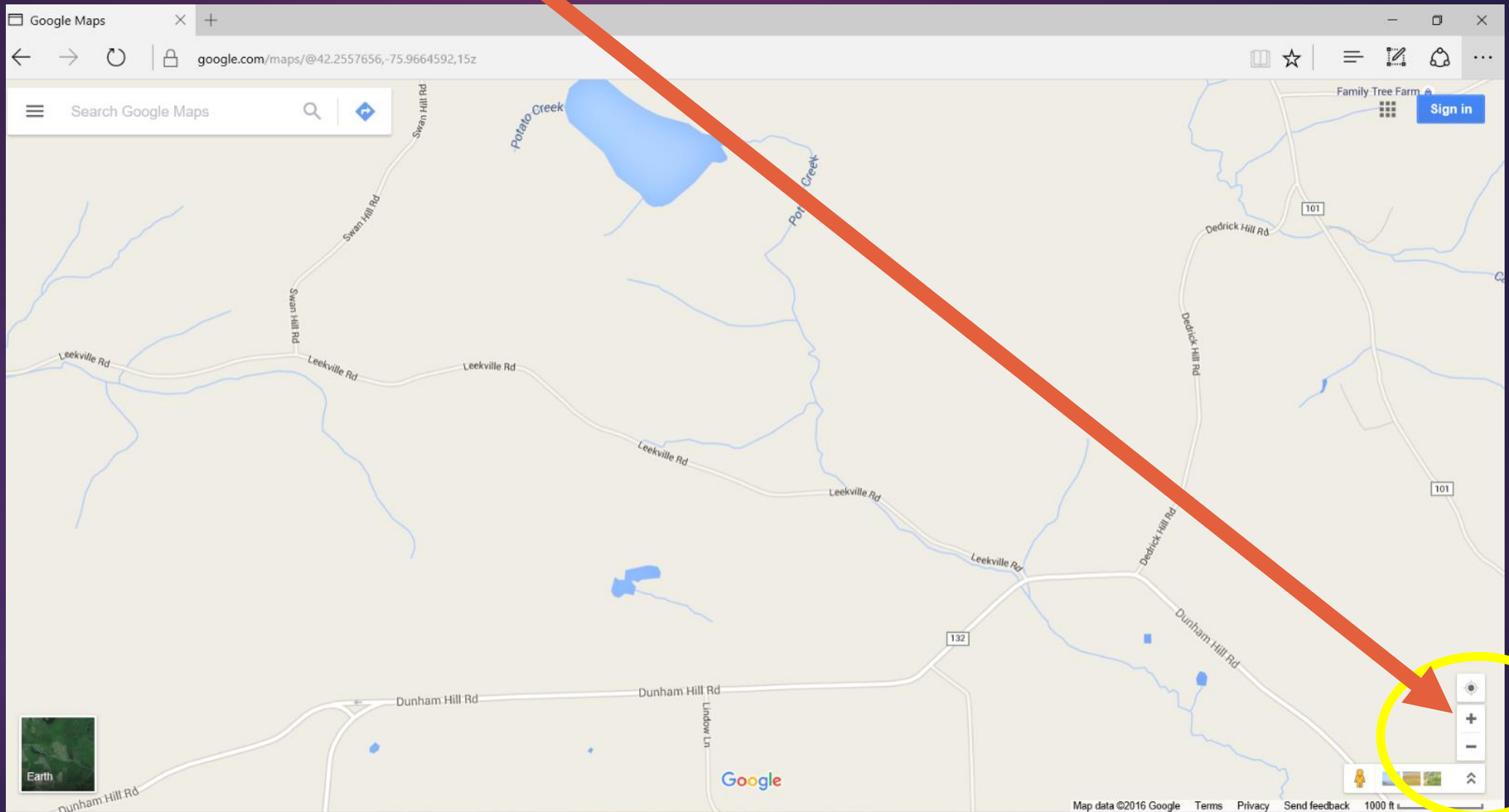
1. Open up Google Maps in your browser.
(www.google.com/maps)



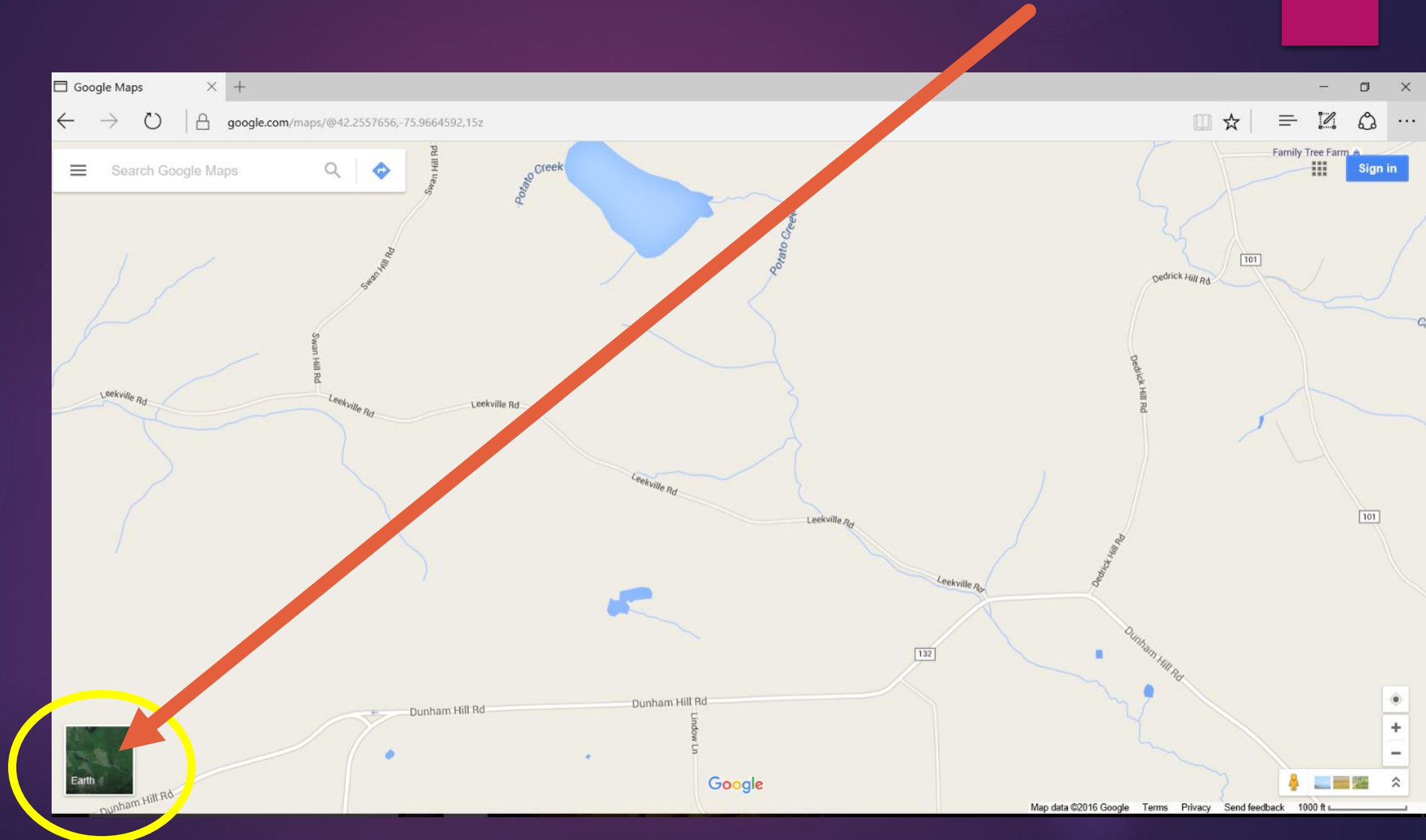
2. Type your farm or field address into the Search Bar and hit Enter



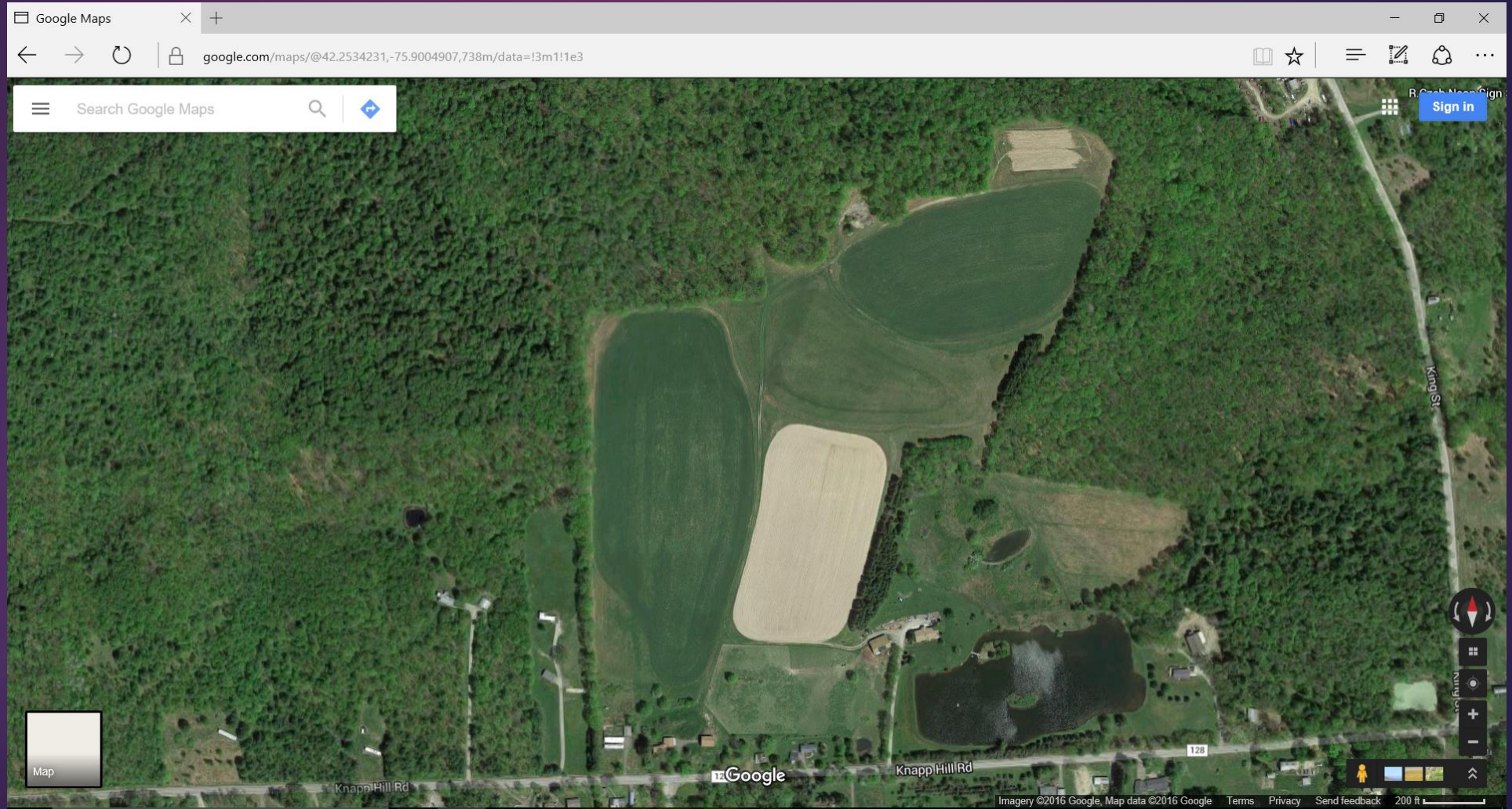
3. Zoom in as needed



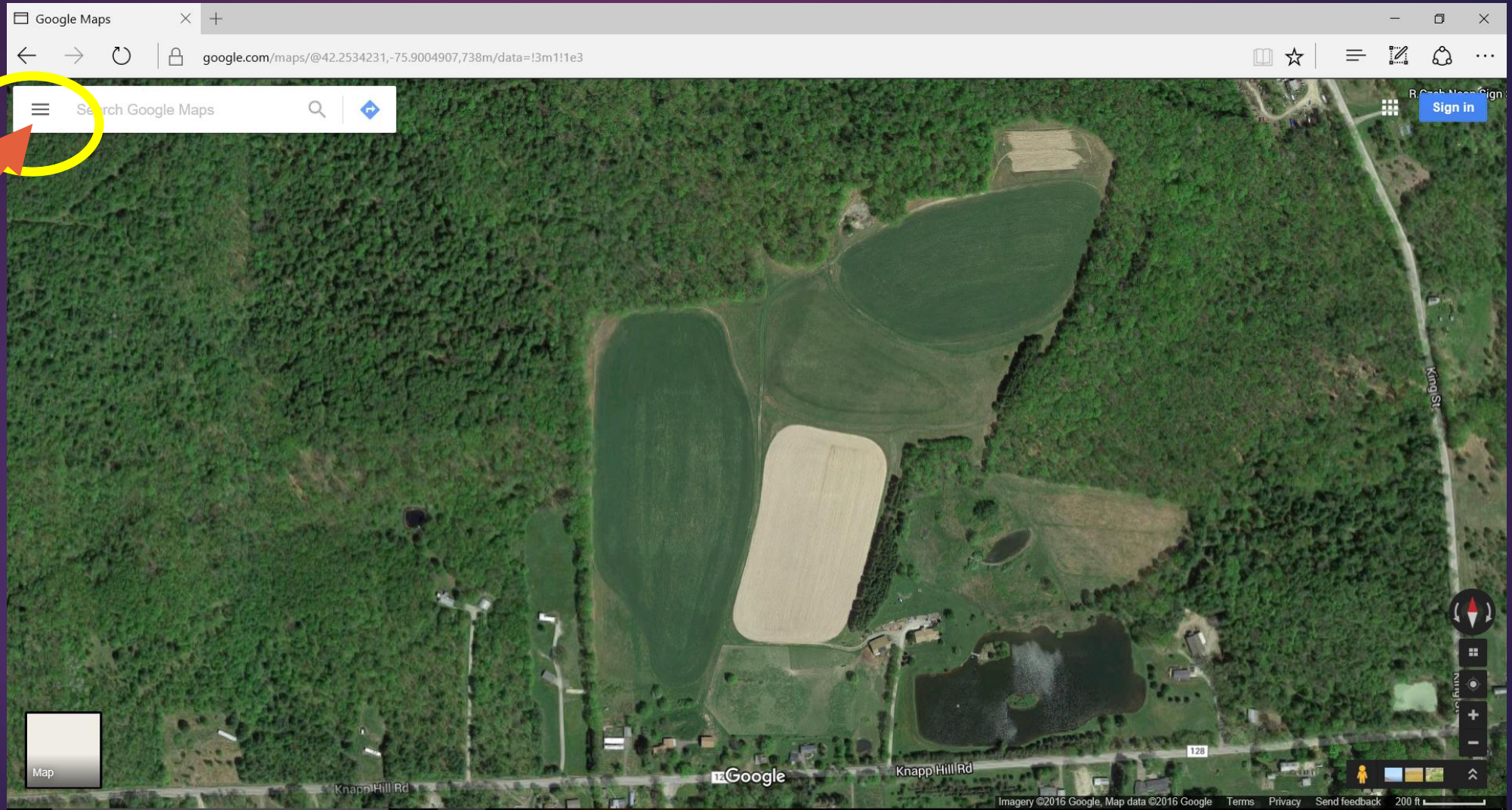
4. Click here to switch to the Satellite view



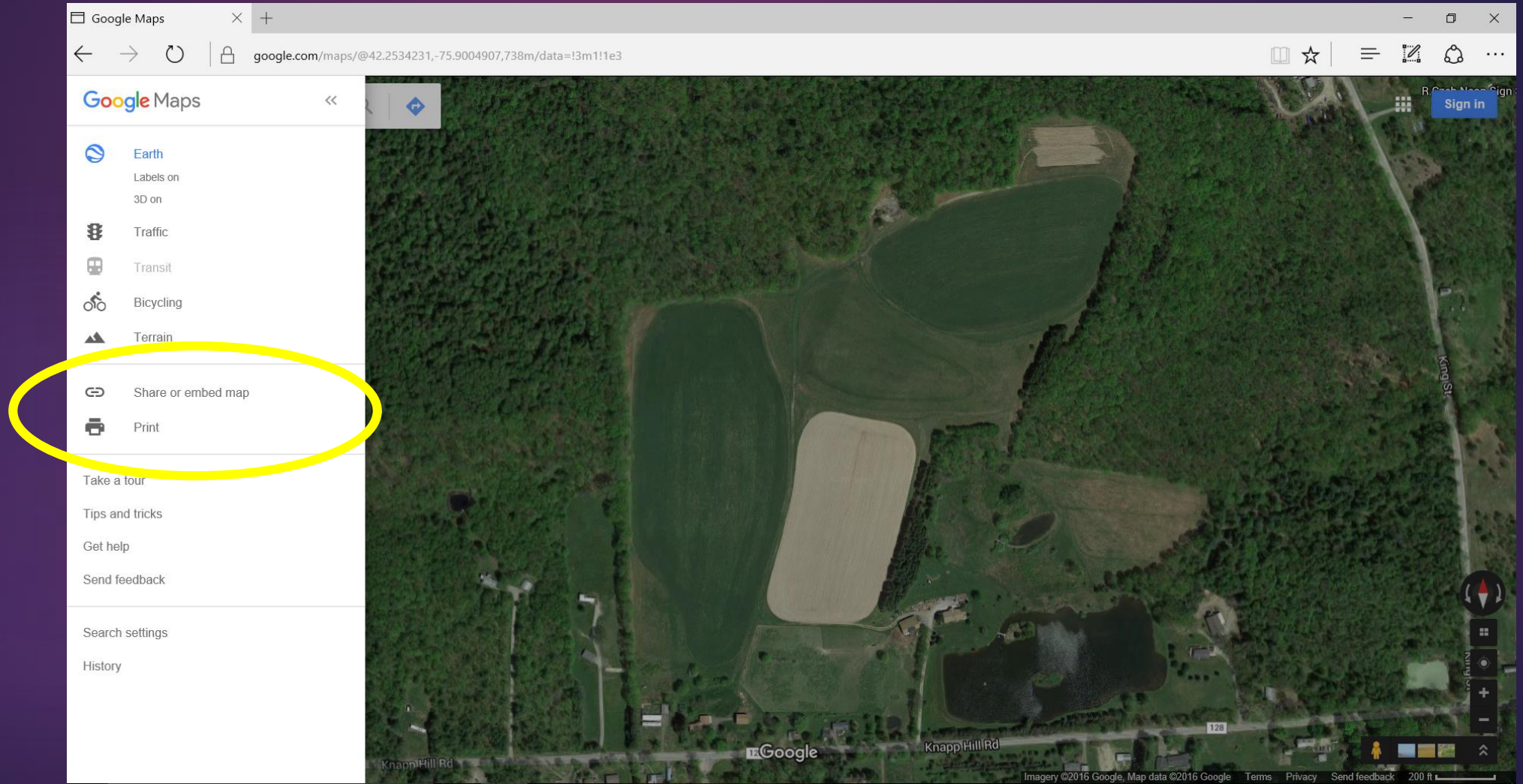
5. Adjust the view of the map by zooming in or out as needed. You can also move the view of the map by clicking directly on it and dragging until the fields or farm overview is as desired.



6. Click on the menu tool to print or send as a link.

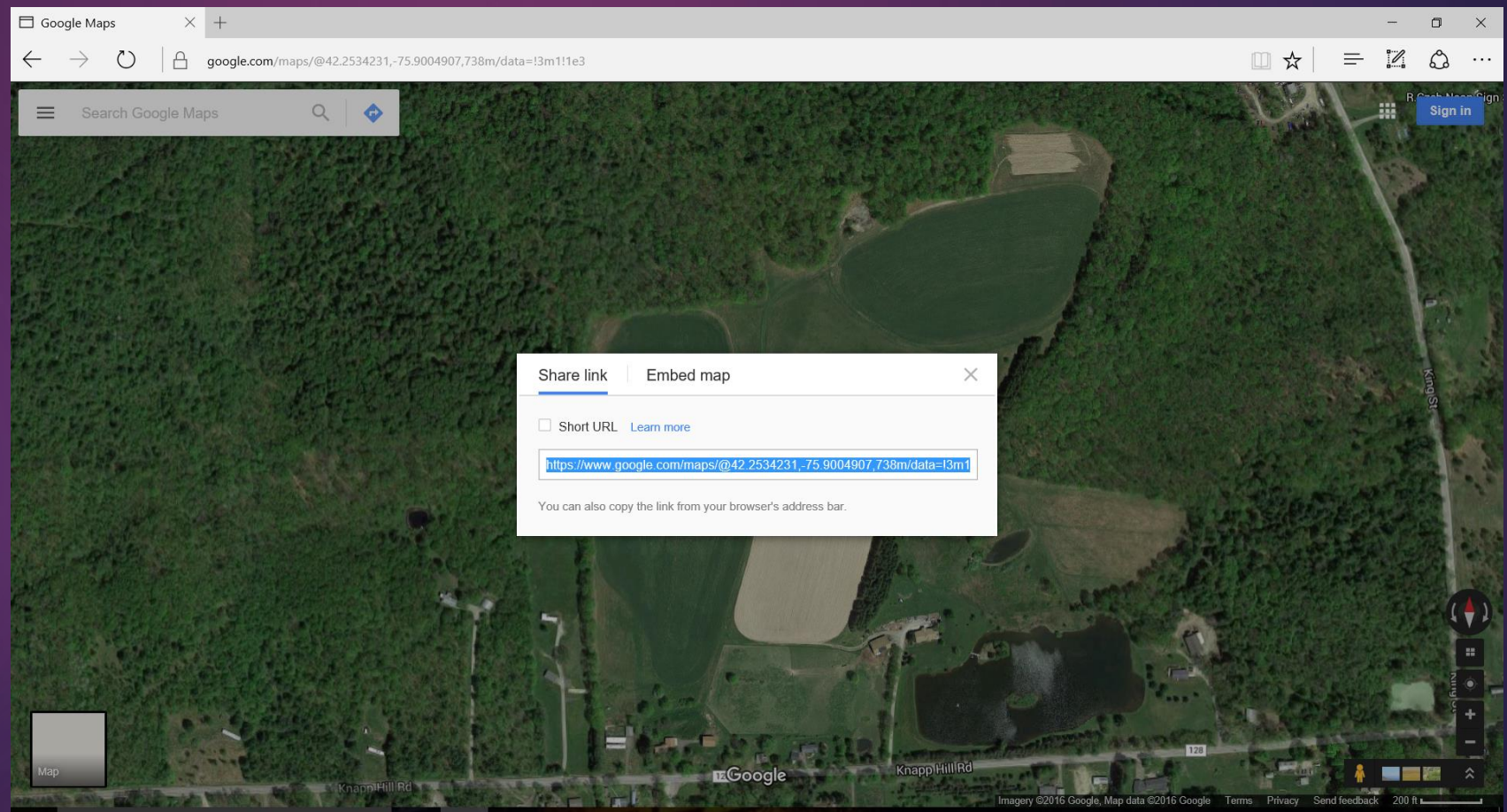


7. Select either share to send via email or print out.



9. If you wish to share the link in an email: select Share Link, then on your keyboard, press C and Ctrl to copy the link.

10. Open your email and press V and Ctrl to paste the link in the body of your email.



Quick Reminders

- ▶ Be sure to label your fields with ID and acreage
- ▶ Field maps are needed for each field to be added to your certification